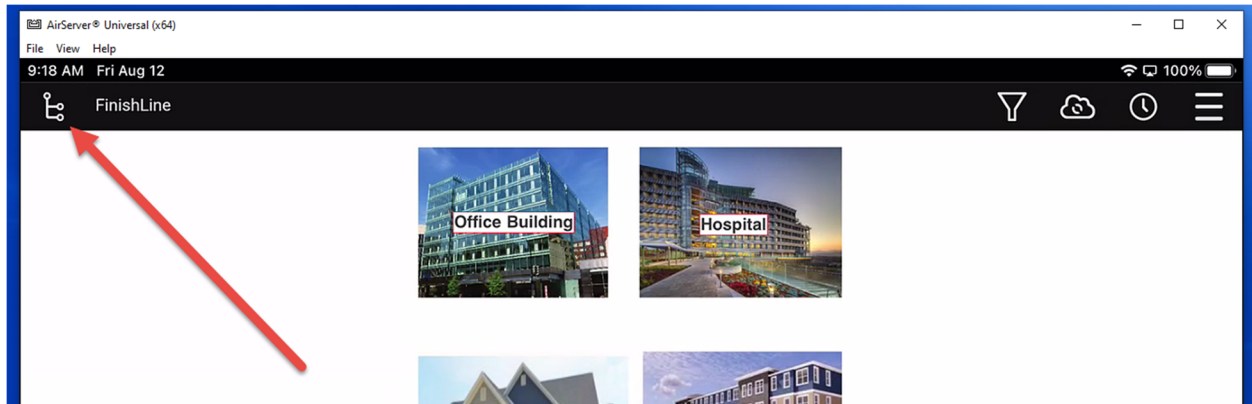
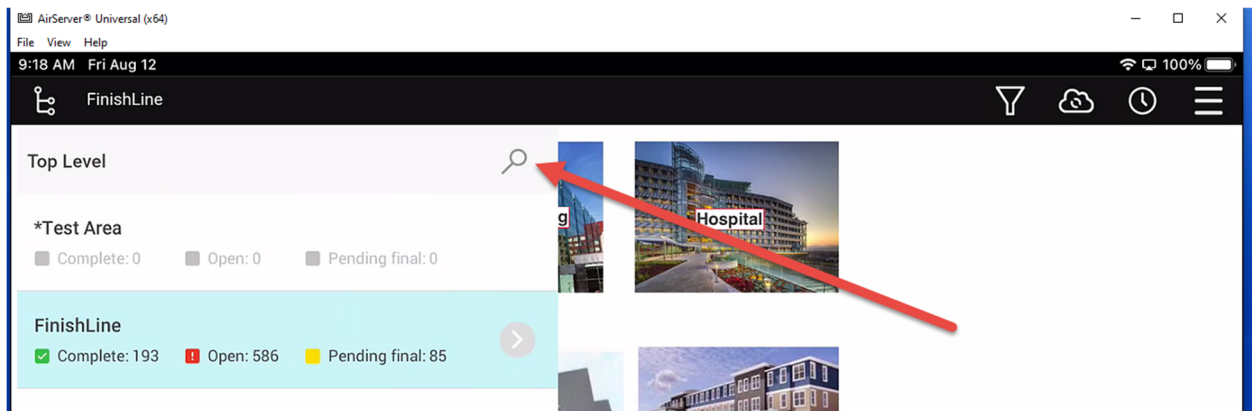


## Using QR Codes for Navigation

**Log into your project with the FinishLine App. Then click on the icon in the top left to open the navigation window.**

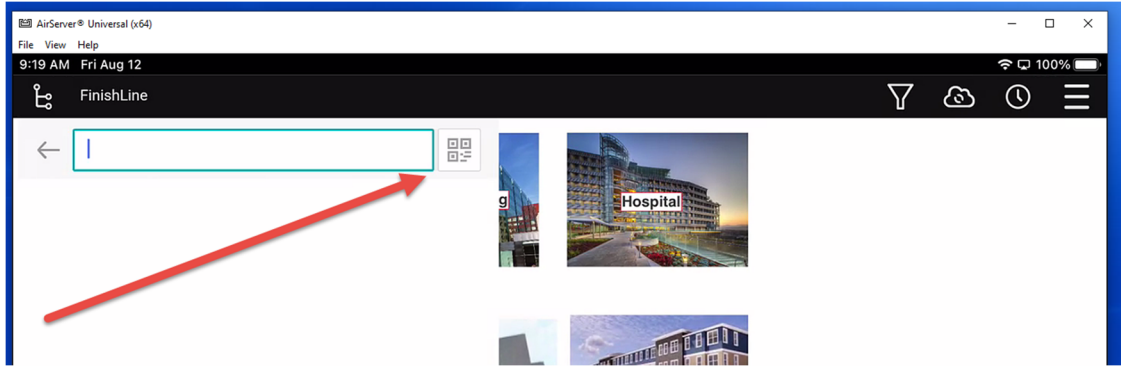


**From the navigation window click on the Magnifying Glass Icon. This will open the search window.**

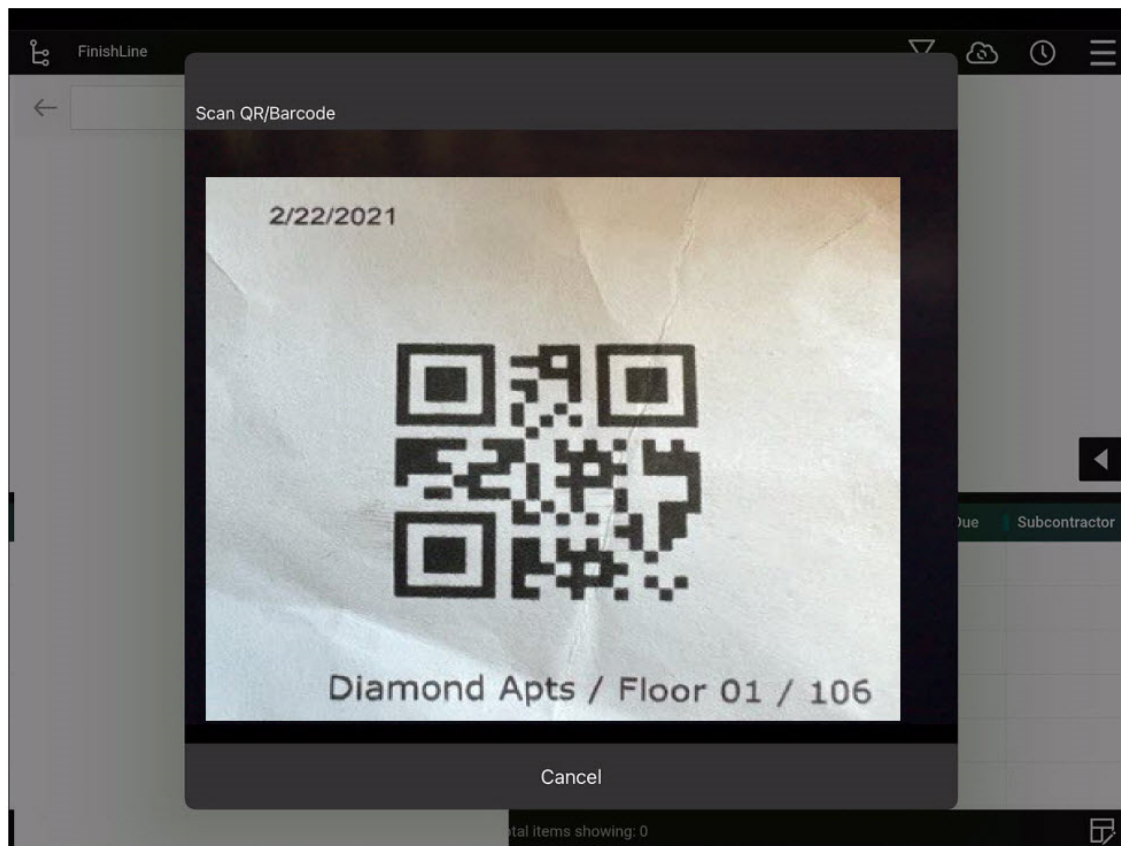


## Using QR Codes for Navigation

Click on the QR code icon next to the search box.



This will access your camera, point your camera at the QR code.



## Using QR Codes for Navigation

The program will then navigate to the Plan View indicated in the QR code.

<input type="checkbox"/>	Item #	Priority	Space	Location	Status	Description: Action	Comments	Due	Subcontractor
<input type="checkbox"/>			Den	Where Indicate	Open	Pipe Replacement: Pipe Reple		02/27/2	General Contra
<input type="checkbox"/>		2-Normal	BR1	Where Indicate	Pending Final	Excessive Noise: Repair/Repl	Model Number	03/10/2	Electrical Elite
<input type="checkbox"/>		2-Normal	Balcony	Device	Pending Final	Inoperative: Repair/Replace		07/25/2	Electrical Elite
<input type="checkbox"/>		2-Normal	LR/DR	Glass	Open	Broken/Shattered: Repair	needs to be blu	07/25/2	Windows See T
<input type="checkbox"/>		2-Normal	MBR	Glass	Open	Broken/Shattered: Repair		07/25/2	Windows See T
<input type="checkbox"/>		2-Normal	BR1	Glass	Open	Broken/Shattered: Repair	needs to be blu	07/25/2	Windows See T

Any questions? Email [support@punchlist.net](mailto:support@punchlist.net) or call 1-888-869-8685